

Criteria for a Healthcare Capital Expenditures

The State Fiscal Recovery Fund (SFRF) of the American Rescue Plan Act (ARPA) states that expenses incurred for public health needs arising out of the pandemic are eligible for coverage under the SFRF.

Eligible expenses public health expenses must:

- Identify a need or negative impact of the COVID-19 pandemic;
- Identify how the program, service, or other intervention addresses the identified need or impact; and
- Be a cost is incurred between March 3, 2020, and December 31, 2024.
 - Note, a cost incurred means that the costs paid for using SFRF are incurred after March 3, 2021 (note, it is acceptable for the project to have been planned before this date) and the funds are obligated by December 31, 2024. The period of performance, however, extends until December 31, 2026.

Criteria for a Healthcare Capital Expenditures

Applying the criteria to healthcare capital expense could include expenses that:

- Address areas of public health negatively impacted by COVID-19 pandemic including mental health, substance abuse, domestic violence, and decline in preventative health measures. For instance, guidance states that “new or enhanced government services may be needed to meet behavioral health needs exacerbated by the pandemic and respond to other public health impacts.
- Address disparities in public health outcomes along racial, ethnic, and socioeconomic lines.
- Provide services “to facilitate access to resources that improve health outcomes, including services that connect residents with health care resources and public assistance programs and build healthier environments” in populations in qualified census tracts or other communities that are evidenced to have been disproportionately impacted by the pandemic.



Turney Center Industrial Complex, Health Clinic Improvements

- Objective: To provide non-recurring funding for the design and construction of an onsite health clinic to accommodate the ongoing medical needs, for response to the COVID-19 pandemic and provide care for secondary COVID related effects. Currently there is limited treatment capacity in the original health clinic constructed in the 1970's for a smaller population.
- Cost: \$4,500,000
- Length of project: Approximately 24 months
- Temporary number of employees: 0

Turney Center Industrial Complex, Health Clinic Improvements

- Scope includes construction of a new freestanding health clinic inside the secure perimeter, with all associated supporting building systems.
- The original day clinic is inadequate for current needs with barely enough space for medical staff and 3 inmate patients for observation.
- During the pandemic, the prison was reliant upon Hickman County Medical Emergency Service for transportation to Nashville General Hospital for care, diverting limited healthcare resources from local needs.
- The project will increase the capacity for on-site care to 6-10 patient rooms, reduce treatment cost and provide improved access. TCIX offenders treated at Nashville General Hospital increased by 250% during 2020.



TEMA



TEMA Main Warehouse

- The recommendation from TEMA is to develop and maintain a warehouse consisting of 146,000 sq. ft on the current Sidco footprint that can be ready for resource deployment within 24 hours of any given emergency and/or national supply shortages as realized during COVID-19 response.
- Estimated Cost - \$45,793,240
- Length of project – 24 months
- Temporary # of employees – 0
 - *Permanent FTEs To Be Requested In FY23 Cost Increases*

PPE Distribution To Date

19,531

1,579,442
n95 respirators

9,490,321
surgical masks

19,345
clear masks

1,663,768
kn95 respirators

58,276,200
gloves

493,135
face shields

222,955
goggles

730,579
shoe covers

118,273
coveralls

2,692,554
gowns

250,568
disinfecting wipes

123,003
disinfecting spray

213,622
hand sanitizer

COVID-19 Test Kit Requests and Shipments

Approved Show All No Yes

Select a date Last 7 Days Last 14 Days Show All

TEMA Region
All Regions

Select a category
All Counties



Requests	BinaxNOW Kits Requested	Everlywell Kits Requested	P23 Nasal Swab Kits Requested	P23 Saliva Test Kits Requested	Quidel Test Kits Requested	Ellume Test Kits Requested
3,041	2,047,330	213,050	20,770	18,870	120,600	29,112
2,918 Shipments	2,066,140 Shipped	211,600 Shipped	21,090 Shipped	18,700 Shipped	120,450 Shipped	27,240 Shipped

TEMA Warehouse (West Region)

- Through the buildout of a regional TEMA warehouse consisting of 32,000 sq. ft located in Jackson and a consolidation of the vehicle maintenance and communications function onsite, a more nimble and efficient response to all disasters will be realized. If completed, TEMA will reach a level of logistical preparedness commensurate to the challenges imposed by COVID-19 and ensure readiness for continued response to this and future challenges. TEMA is the lead for all COVID-19 response coordination and PPE distribution in the State of Tennessee.
- Estimated Cost - \$10,874,760
- Length of project – 24 months
- Temporary # of employees – 0
 - *Permanent FTEs To Be Requested In FY23 Cost Increases*

TEMA WAREHOUSE PROJECT

West Region

Jackson, TN



CAPABILITIES

- Current warehousing capability in West Region (Jackson) does not provide climate controlled options required for preservation of PPE and other medical equipment.



TIME

- Reduces response time to disasters through strategic storage and repositioning of goods and equipment.



STAFF UTILIZATION

- Allows for utilization of West Region staff to supplement logistical operations in time of a disaster.



Jackson -> Memphis is a

56%

quicker trip compared to the current warehousing capabilities.

TEMA Warehouse (East Region)

- Through the buildout of a regional TEMA warehouse consisting of 36,000 sq. ft located in Knoxville and a consolidation of the vehicle maintenance and communications function onsite, a more nimble and efficient response to all disasters will be realized. If completed, TEMA will reach a level of logistical preparedness commensurate to the challenges imposed by COVID-19 and ensure readiness for continued response to this and future challenges. TEMA is the lead for all COVID-19 response coordination and PPE distribution in the State of Tennessee.
- Estimated Cost - \$12,753,000
- Length of project - 24 months
- Temporary # of employees – 0
 - *Permanent FTEs To Be Requested In FY23 Cost Increases*



Knoxville -> Johnson City is a

63%

quicker trip compared to the current warehousing capabilities.

TEMA WAREHOUSE PROJECT East Region

KNOXVILLE, TN



CAPABILITIES

- No current warehousing capabilities are present in current East Region (Knoxville).
- Adds reception and distribution point in region.



TIME

- Reduces response time to disasters through strategic storage and prepositioning of goods and equipment.



STAFF UTILIZATION

- Allows for utilization of East Region staff to supplement logistical operations in time of a disaster.

TEMA Warehouse (Southeast Region)

- Through the buildout of a regional TEMA warehouse consisting of 31,000 sq. ft located in Chattanooga and a consolidation of the vehicle maintenance and communications function onsite, a more nimble and efficient response to all disasters will be realized. If completed, TEMA will reach a level of logistical preparedness commensurate to the challenges imposed by COVID-19 and ensure readiness for continued response to this and future challenges. TEMA is the lead for all COVID-19 response coordination and PPE distribution in the State of Tennessee.
- Estimated Cost - \$10,405,200
- Length of project – 24 months
- Temporary # of employees – 0
 - *Permanent FTEs To Be Requested In FY23 Cost Increases*

TEMA WAREHOUSE PROJECT

Southeast Region

Chattanooga, TN



CAPABILITIES

- Current warehousing capability in Southeast Region (Chattanooga) does not exist .



TIME

- Reduces response time to disasters through strategic storage and prepositioning of goods and equipment.



STAFF UTILIZATION

- Allows for utilization of Southeast Region staff to supplement logistical operations in time of a disaster.



Chattanooga -> Ducktown is a

65%

quicker trip compared to the current warehousing capabilities.

Department of Military Controlled Humidity Warehouse

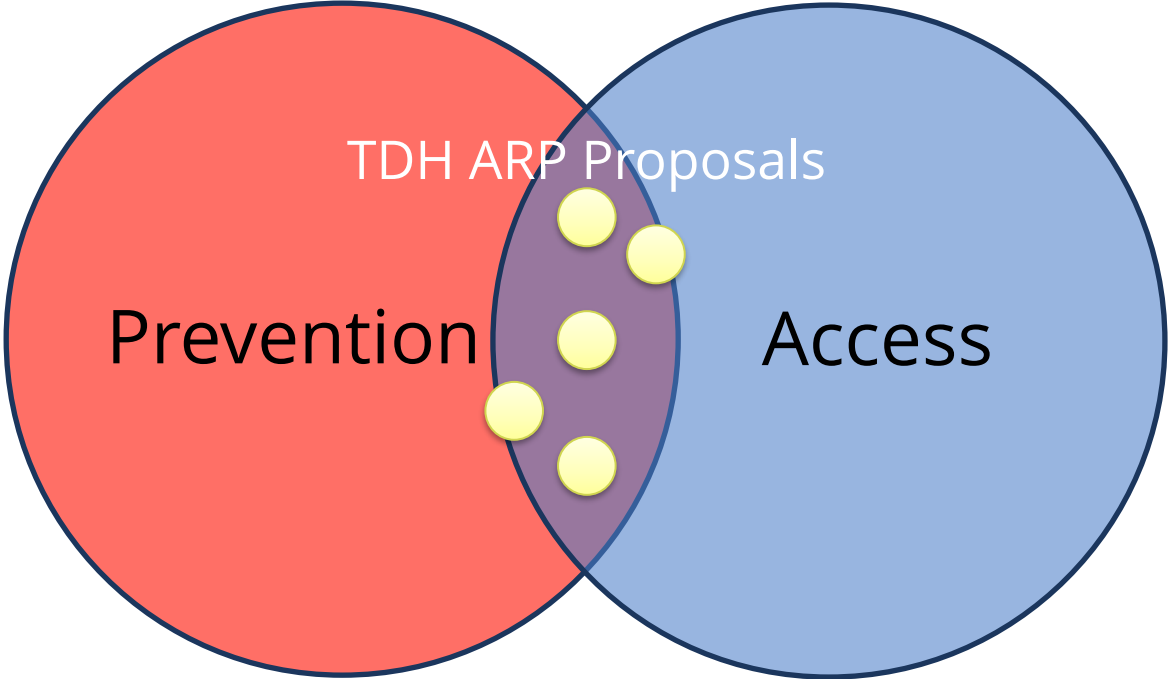
- Objective: To provide non-recurring funding for DOM to update completed design documents and construct a 101,156 SF Controlled Humidity Warehouse away from the JFHQ, freeing space to construct the new TEMA Emergency Operations Center, agency priority 2. This warehouse supports critical TNARNG administrative and logistical requirements essential to overall pandemic response across the State.
- Cost: \$31,224,000
- Length of project: 18 months
- Temporary # of employees: construction contractors to build

Department of Military Controlled Humidity Warehouse

- This is a capital investment in a public facility to meet ever expanding pandemic operational needs from the Tennessee Army National Guard.
 - Current facility does not provide assigned employees and their customers the necessary space to safely distance while performing their jobs
 - more than 40,000 square feet below the size authorized for Tennessee's logistics mission and nearly 50 years old
 - lack of modern storage facilities places surge materials at risk for lack of space and inability to protect and quickly distribute across the State.
 - The current state property is co-located with Tennessee's Joint Force Headquarters within the city limits of Nashville, with no room for expansion.
 - JFHQ campus plan hinges upon space to construct a new TEMA EOC in the footprint of the current USPFO Warehouse
 - State funds are needed to update the existing 90% design and bid, allowing quick project completion and improved support of the pandemic response



Successfully Achieving the TDH Mission



TDH Capital Projects: A Vision for Prevention & Access through Improved Customer Service



New State Public Health Lab (Nashville)

- **Objective:** Adequately meet the diagnostic needs of families, communities, and the state by addressing the Lab's
 - COVID-19 response and extremely limited surge capacity for future pandemics
 - Increasingly expensive maintenance costs
 - Risk of reduced service/testing capacity for key customers and programs (e.g., Newborn Screening, CDC, depts. of Agriculture and Environment & Conservation)
 - Safety and efficiency concerns
- **Cost:** \$200 million
- **Length of project:** 3-4 years
- **Temporary # of employees:** 0

New State Public Health Lab (2)



East TN Regional Health Office (ETRHO) & Lab Replacement Facility

- The goal of this project is to replace the current public health facility located within The University Medical Center campus to another central location for the 15-county area that it serves
- The lab component provides mutual redundancy with the Nashville Lab for certain functions and requires infrastructure to support 24/7 operations
- The Regional Health Operations Center (RHOC) & Emergency Preparedness component serves as an incident command center working directly with Emergency Preparedness for the same 15-county area
- Approx. \$85M Total Project Cost
- 31 months design & construction duration
- No temporary employees are anticipated for this project

**East Tennessee
Regional Health Office and Laboratory**

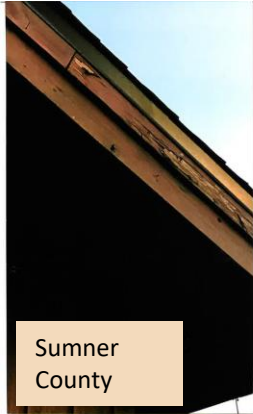
University of Tennessee Medical Center Campus



Replace 17 County Facilities

- **Objective:** All patients and staff enter a local health department that is clean, spacious, and efficient.
 - Current services affected by lack of space, consistent water damage, unsafe and crowded working conditions, and aging infrastructure
 - Many facilities were not designed for primary care workflow
 - TDH has determined 17 facilities are wholly inadequate and need to be replaced (5 in distressed/at-risk counties)
- **Cost:** \$77 million
- **Length of project:** 3-4 Years
- **Temporary # of employees:** 0

Replace 17 County Facilities (2)



Statewide Facility Updates

- **Objective:** Provide a quality workplace and patient experience at every county health department
 - Address lighting, flooring, HVAC, leaky roofs, and other needs
 - Generate ongoing cost savings through reduced maintenance needs
 - Improve parking and special event (e.g., testing, vaccinations) traffic flow
 - Contracts with county governments would ensure all upgrades meet TDH specifications
- **Cost:** \$31 million
- **Length of project:** 2-3 Years
- **Temporary # of employees:** 0

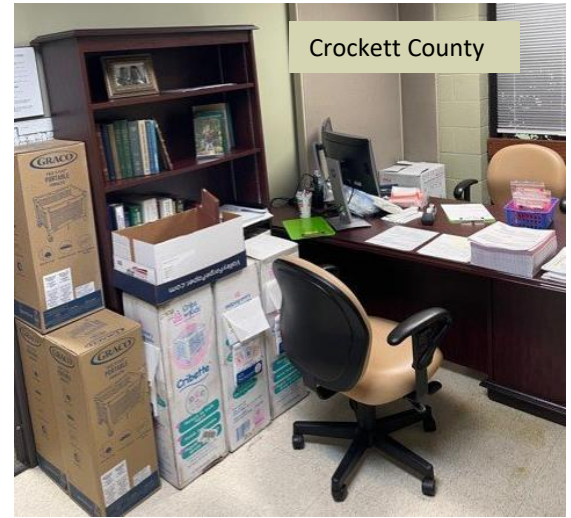
Statewide Facility Updates (2)



Johnson County



Henderson County



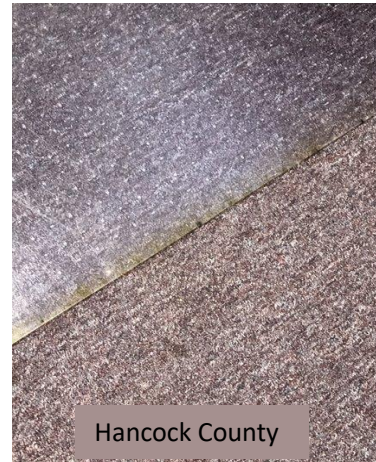
Crockett County



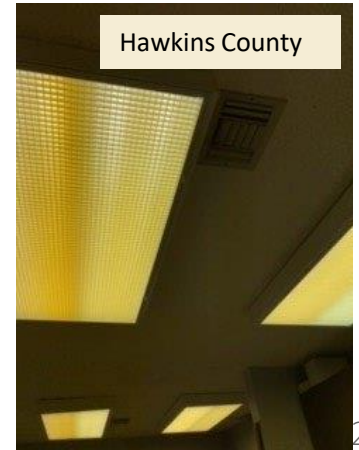
Roane County



Green County



Hancock County



Hawkins County

Significant County Facility Renovations

- **Objective:** All patients and staff enter a local health department that is clean, spacious, and efficient
 - As counties have grown and changed, many facilities have outgrown their space
 - Quality and efficiency are negatively affected when facilities are overstretched
 - TDH has determined 27 facilities need significant renovations (9 in distressed/at-risk counties)
- **Cost:** \$11 million
- **Length of project:** 3-4 years
- **Temporary # of employees:** 0

Significant County Facility Renovations (2)



Regional Health Office Construction, Electronic Signs, Phone system Upgrades, Admin Expenses for Parts 1-7

- **Objective:** Improve customer service, efficiency, and effectiveness of TDH operations by
 - Replacing two regional offices that are past operational lifespan
 - Keeping customers informed of key services (e.g., testing hours)
 - Accommodating increased phone traffic
 - Consulting with county governments on construction and ensuring compliance
- **Cost:** \$31 million
- **Length of project:** 3-4 Years
- **Temporary # of employees:** 0 state FTEs; 2 contract employees

Regional Health Office Construction, Electronic Signs, Phone system Upgrades, Admin Expenses for Parts 1-8

