

Division of Mineral & Geologic Resources

Bryan Epperson
Director
bryan.epperson@tn.gov
865-308-3699

Roxanne Reiley
Deputy Director
roxanne.reiley@tn.gov
865-770-8812

Mining Section

Compliance & Enforcement

Tennessee Geological Survey

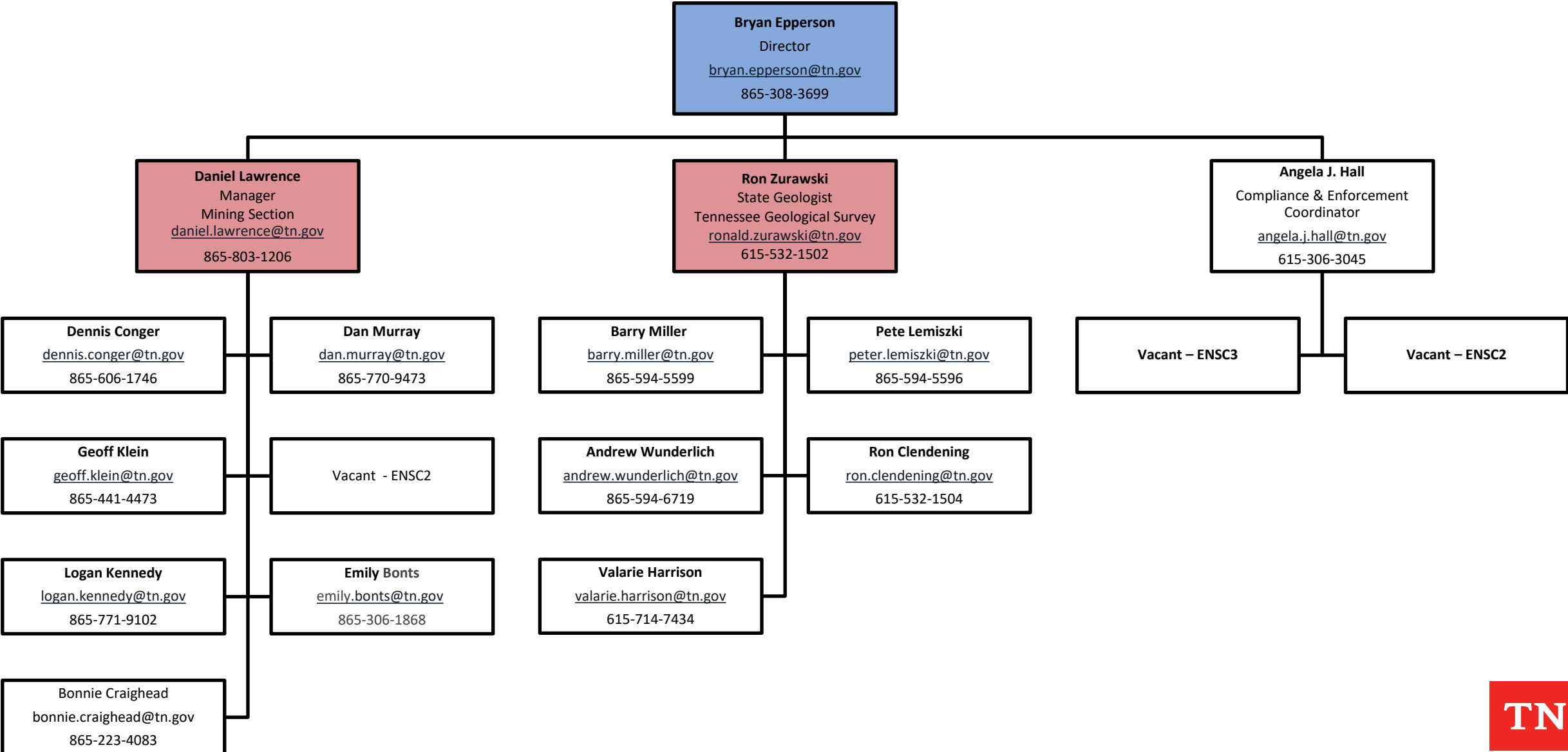
Abandoned Mine Lands /
Land Reclamation

Division Operations

Oil & Gas Program



Division of Mineral & Geologic Resources



Division of Mineral & Geologic Resources

